

Blinder Update Software

Blinder Update Software has 2 purposes:

Software Updates – Page 2

Used for updating the BLINDER CPU (CPU firmware) with new versions.

CPU Settings – Page 3

Used for adjusting of the CPU settings such as jamming time, start up sound and more.

Go to www.blinder.dk and download and install the newest version of Blinder Update Software (if not installed already). In any cases it will be a good idea to check for latest product information and help files at www.blinder.dk

*For installing the Blinder Update for the first time please also see the **PC Update Installation help file.PDF***

Blinder Update Screen

The screenshot shows the BlinderUpdate application window. It is divided into several sections: 'Connection' (Status: Device connected, Hardware version: 2, Software version: 2), 'Version' (a list of firmware versions: 2.0 EU, 2.0 USA, 2.01 EU, 2.01 USA, with 2.0 USA selected), and 'Parksensor' settings (Parksensor ports: Port 1, Port 2, Port 3, Port 4, all checked; Startup sound: checked; Jamming time: 5 sec, 8 sec, Constant Jamming; Alarm time after jamming: 3). At the bottom, there are 'Update CPU firmware', 'Save CPU settings', and 'Read CPU settings' buttons. A red circle highlights the 'Parksensor' settings area. Six callout boxes with red arrows point to specific elements: 'Status for USB connection to the CPU' points to the 'Device connected' status; 'Select Firmware version here' points to the '2.0 USA' selection; 'Click here to update the CPU firmware' points to the 'Update CPU firmware' button; 'Adjust the CPU Settings here' points to the 'Parksensor' settings area; 'Click here for saving the new settings to the CPU' points to the 'Save CPU settings' button; and 'Click here to read the present settings from the CPU' points to the 'Read CPU settings' button.

Software Updates

How to update your Blinder CPU Firmware to new versions

1

Check on www.blinder.dk if you have the latest version of the Blinder Update Software installed at your PC. If not, download the new version before proceeding.

2

You can either update your Blinder CPU while it is mounted on the vehicle or you can disconnect and remove it if that is most appropriate. In cases where you do NOT disconnect the Blinder CPU make sure the power is turned off before proceeding – The switch shall be in the middle position (0).

3

Start the Blinder Update Software

Connect the Blinder CPU to your PC by the USB plug. After a few moments Blinder Update will find the Blinder CPU and indicate this in the top left corner (Status: device connected)

Select the wanted firmware version in the lower left box

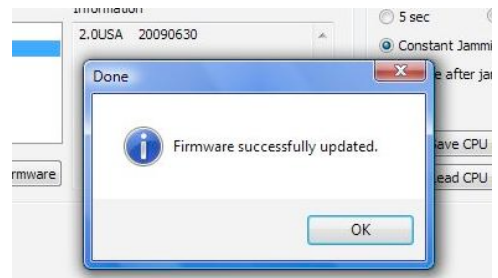
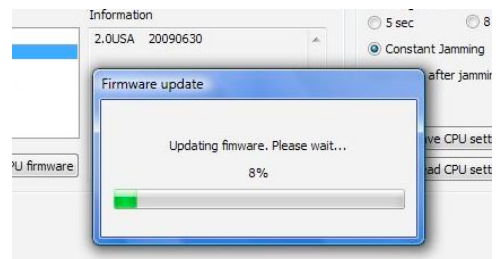
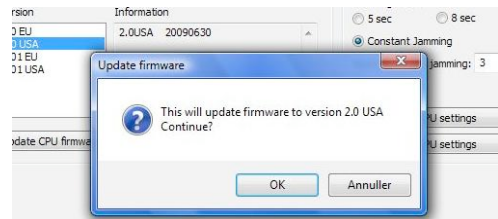
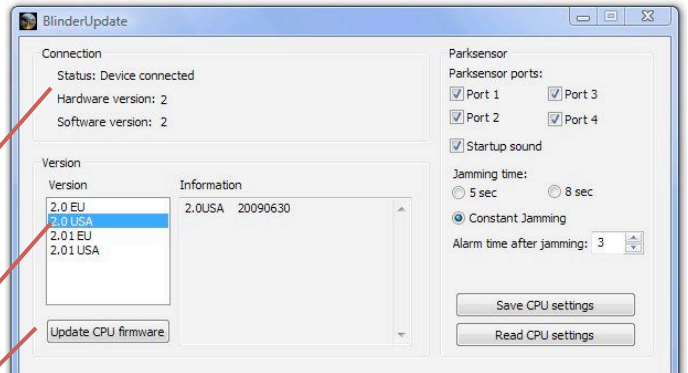
Press button “Update CPU firmware”

Click “OK” to confirm “update firmware” in next window.

Please wait while the CPU firmware is updated. It may take a few minutes.

Click “OK” in next window “Firmware successfully updated”.

Now the CPU has been updated with the new firmware, and next step is to update the Blinder transponders on the vehicle.



4**Update the Blinder transponders on the vehicle**

Disconnect the USB plug from the Blinder CPU

If disconnected, re-connect the transponders, power supply and alert plug to the CPU.

Turn the switch to position II. Now the CPU will automatically start the updating process of all connected transponders, one transponder at a time during which period the system is flashing (GREEN) and beeping quickly. It takes approximately 5-10 seconds for each transponder connected to the system with a short break between.

When all connected transponders have been updated successfully the system will send out a red flash / beep 2 times.

Done!

Adjust the CPU Settings

You can adjust the settings listed below:

Parking sensor Ports

Select which of the ports (1-4) on the CPU that you want to have the parking sensor function.

Startup Sound

Whether you want the system to send out a startup sound or not.

Jamming Time

You can select how long time the system will send out jamming pulses after laser detection. Choose between 5 or 8 seconds or constant jamming (As long as the vehicle is hit by the IR Light from a speed laser).

Save CPU Settings

When finish press the "Save CPU Settings" button.

Done!

